



Kiopedo karlotchy
for construction technology

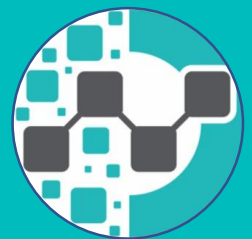


FUEL FREE GENERATOR

The Future Of Clean Energy

INDEX

1	Cover Page
2	Table Of Content
3	General Idea
4	Technical Specifications
5	Comparison
6	Quality Control Steps
7	Batteries
8	Price
9	Back Cover



ABOUT THE PRODUCT

The problem of traditional energy has become afflicting the world, especially, the industrialized and oil producing countries alike So we turned to sustainable and renewable energy to get clean electricity.

The generator works without fossil fuels starting from 5 kilowatts and up to 5 megawatts

it's Recorded in (Arab Republic of Egypt - Russia - European Union) and can be used in

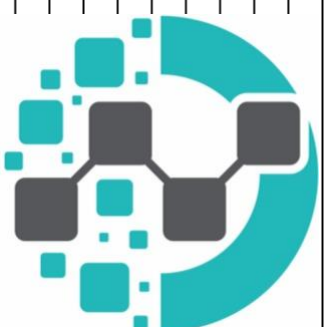
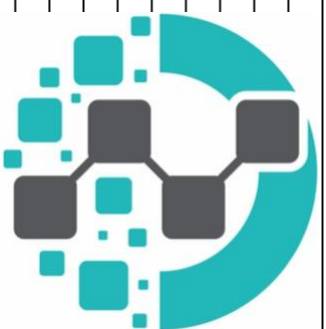
- Factories • Farms • Roads • Tunnels
- mines • Houses • Oil rigs • Hospitals • Schools and universities • Remote Location



PERMANENT MAGNET SYNCHRONOUS GENERATOR

Technical Specification

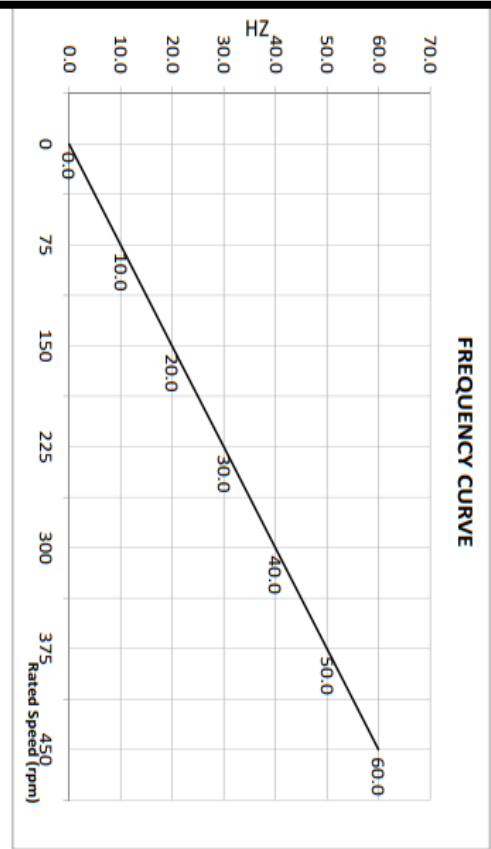
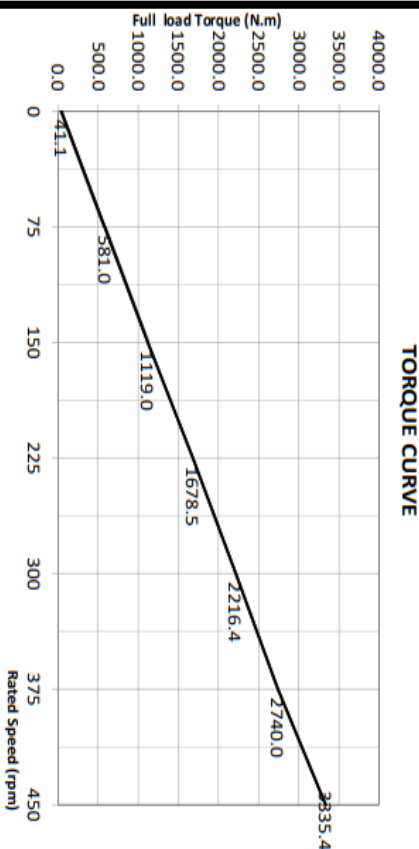
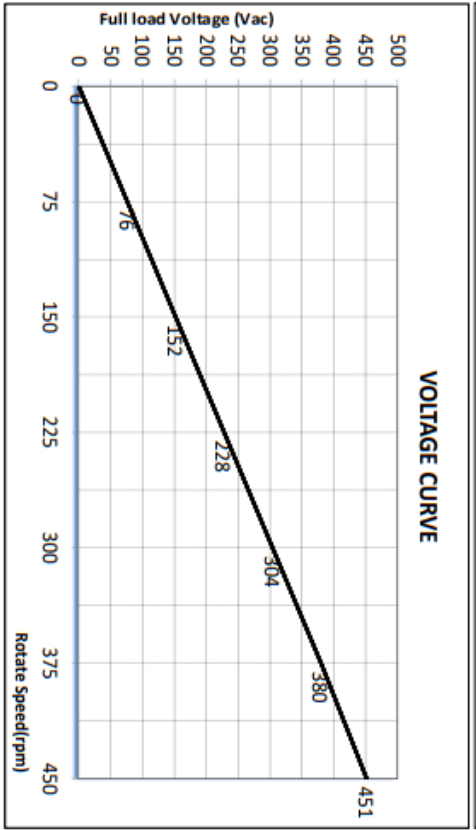
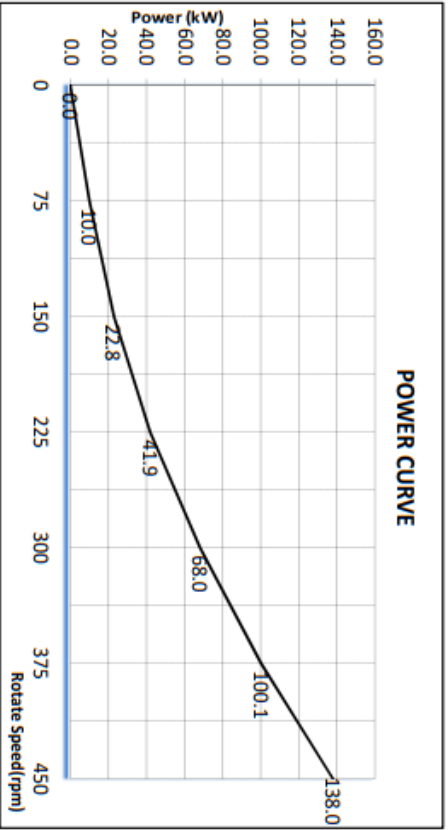
No.	Model No.	GDF-160	GDF-180	GDF-200	GDF-280	GDF-315	GDF-355	GDF-400	GDF-500	GDF-630	GDF-710
1											
2	Rated power	5 KW	10 KW	20 KW	50 KW	100 KW	200 KW	500 KW	1000 KW	2000 KW	3000 KW
3	Rated rotate speed	375 rpm	375 rpm	375 rpm	375 rpm	375 rpm	375 rpm	375 rpm	375 rpm	375 rpm	375 rpm
4	Rated output voltage	380 V AC	380 V AC	380 V AC	380 V AC	380 V AC	380 V AC	380 V AC	380 V AC	380 V AC	380 V AC
5	Rated output current	7.6 A	15.2 A	30.4 A	76.0 A	151.9 A	303.9 A	759.7 A	1519.4 A	3038.8 A	4558.2 A
6	Start torque	2.1 Nm	4.1 Nm	8.2 Nm	20.5 Nm	41.1 Nm	82.2 Nm	205.4 Nm	410.8 Nm	821.5 Nm	1232.3 Nm
7	Rated torque	137 Nm	274 Nm	548 Nm	1369 Nm	2738 Nm	5477 Nm	13692 Nm	27384 Nm	54767 Nm	82151 Nm
8	Reference weight	130 kg	160 kg	200 kg	410 kg	1100 kg	1600 kg	2500 kg	4600 kg	9000 kg	12200 kg
9	Gross Weight	630 kg	660 kg	700 kg	910 kg	1600 kg	2600 kg	3500 kg	5400 kg	10000 kg	132200
10	Number of poles	16									
11	Rated output frequency	50Hz									
12	Power factor	≈ 1									
13	Wire connection method	Three Phase and Neutral Wire									
14	Wave form	Pure sine wave									
15	Efficiency at rated speed	$> 93\%$									
16	Winding method	Y									
17	Insulate grade	H									
18	Insulating resistance	20 M Ω									
19	Generator type	Radial Flux Permanent Magnet									
20	Protection class	IP54									
21	Generator shell material	Cast Iron									
22	Winding material	Copper enamelled wire									
23	Shaft material	Steel									
24	Magnet material	Nd-Fe-B (neodymium)									
25	Temperature rise	90 $^{\circ}\text{C}$									
26	Max.working temperature	130 $^{\circ}\text{C}$									
27	Core material	Cold rolled silicon steel sheet									
28	Bearings	SKF steel bearing									
29	Cooling mode	Air fan-cooled									
30	Noise level	70dB (1m distance)									
31	Installation direction	Horizontal									





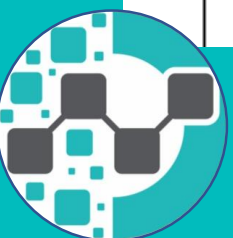
GENERATOR PERFORMANCE DATA SHEET

Model: GDF-100KW-375RPM-380V (Resistive load)



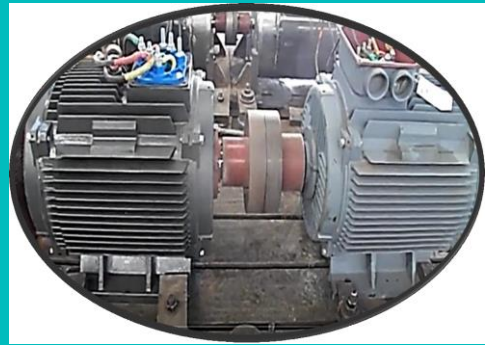
PRODUCT COMPARISON

NO	COMPARISON ITEM	KIOPEDO KARLOTCHY	OTHER PRODUCTS
1	USE OF TRADITIONAL FOSSIL FUEL	NO	FROM 19 TO 220 L/H
2	THE NOISE	LESS THAN 70 DB	MORE THAN 105 DB
3	MAINTENANCE COST	LESS THAN 3%/YEAR	MORE THAN 10%/YEAR
4	COOLING SYSTEMS	AIR	WATER COOLING CYCLE (RADIATOR)
5	AVAILABILITY OF SPARE PARTS	YES	IT PROVIDED UPON REQUEST
6	DUTY CYCLE	24/7/365/15	12 HOURS AND NEEDS REST
7	PRESERVING THE ENVIRONMENT	ENVIRONMENTALLY FRIENDLY	STUDIES HAVE SHOWN RESULTS OF CANCER
8	OPERATOR	NO NEED A PROFESSIONAL TECHNICIAN	IT NEEDS A PROFESSIONAL TECHNECHIAN
9	GUARANTEE	15 YEAR	3-5 YEARS MAX.



QUALITY CONTROLLING STEPS

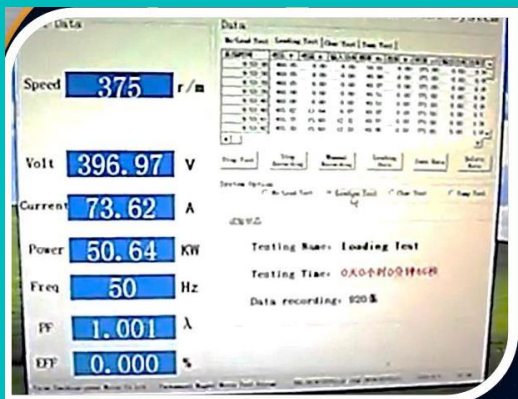
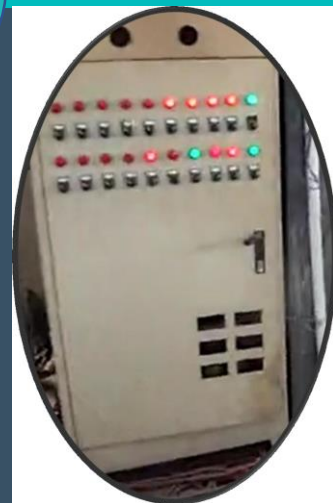
The stage of speed adjustment It begins by connecting the rotor to the engine to adjust the design speeds for the transmission of the movement from the motor to the rotor



The stage of adjusting the bases of the rotor, delta or star.



The stage of loading the generator using the load bank to measure the output of the generator



The stage of inventorying the results of Volts - Hertz - Amperes - number of revolutions per minute



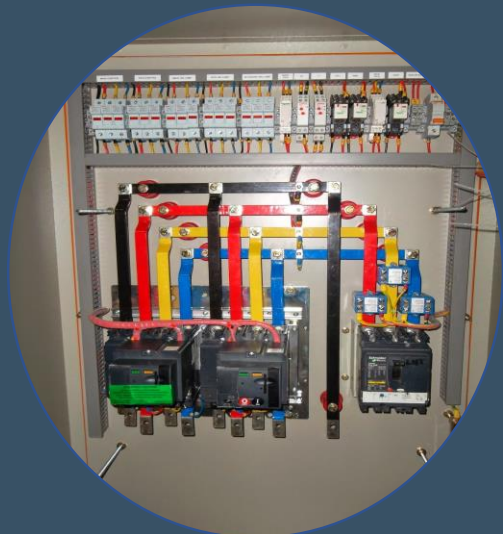
Number of Gel batteries according to the capacity of the generator

3 face induction motor according to the generator



Power inverter

Control panel for all the activities of the generator





**Permanent
magnet
generator
from 5 kw to 5
mw**



The most important specifications for free full generator

First Purposes of use:

-1 houses - farms - factories - residential communities - commercial malls - petroleum platforms - isolated facilities - mines and quarries - roads, bridges and tunnels - ships and marine boats - schools / universities - stadiums – hospitals



Second Technical specifications: (Dimensions - Weight)

1- Weight ranges between 500 kilograms and up to 40,000 kilograms according to capacities

2- Dimensions vary according to energy from (1.5 m * 0.7 m * 0.9 m) to (5.5 m * 2.6 m * 2 m) –

3 - The generator does not store any electricity because it works 24 hours, so there is no need for storage –

4 The generator is environmentally friendly and does not emit environmental / audio pollution as it works without fossil fuel

5 The generator may need a base of reinforced concrete for the installation. It is designed according to the weight of the generator. In generators of large capacities, where the weight exceeds the concrete loads designed for regular installations (greater than 4 tons and up to 40 tons)

Third Maintenance: Maintenance is done for the generator in various stages according to the following rates:

-1 monthly maintenance and in which the work efficiency and safety of components are first checked By visual inspection and making technical measurements on the generator output and its operating efficiency Each year according to the established measurements

-2 Quarterly maintenance in which the defective parts (if any) are changed, and if they result from misuse, they are changed at the expense of the customer

3- Annual maintenance in which the generator is fully inspected and what is needed is changed according to the technical measurements of the efficiency of these parts Depending on its lifespan, some penalty extends its useful life to 20 years

4- The customer's technical personnel are trained to carry out maintenance outside Egypt for a period of 4 working days at a rate of 3 hours per day

-5 In case a comprehensive maintenance is required (not before at least 5 years) the parts are changed Damaged at the expense of the customer where there is a useful life of some components that may reach 20 years and some may reach 5 years

6- The generator is equipped with a smart card to follow up anywhere in the world to quickly solve any problems and provide immediate maintenance

The generator is also equipped with a remote control for all operations

Pricing goes through several stages and global restrictions, and therefore prices cannot be fixed for a long time, as we depend on several items:

- 1- global supply chains**
- 2- currency rates**
- 3- Prices of raw materials, especially iron and copper**
- 4- Customs and taxes, whether in the country of raw materials or in the country of manufacture**

Product selling prices

price per kilowatt

1300 USD – 1300 euros - 25000 Egyptian pounds



KIOPEDO KARLOTCHY
FOR CONSTRUCTION TECHNOLOGY



Find Us

13 DR Hanem Mohamed St., Giza, Egypt

Contact Us

00201003017993

INFO@KIOPEDOKARLOTCHY.COM

Ahmed.Effat@mail.com

kiopedokarlotchy.com

